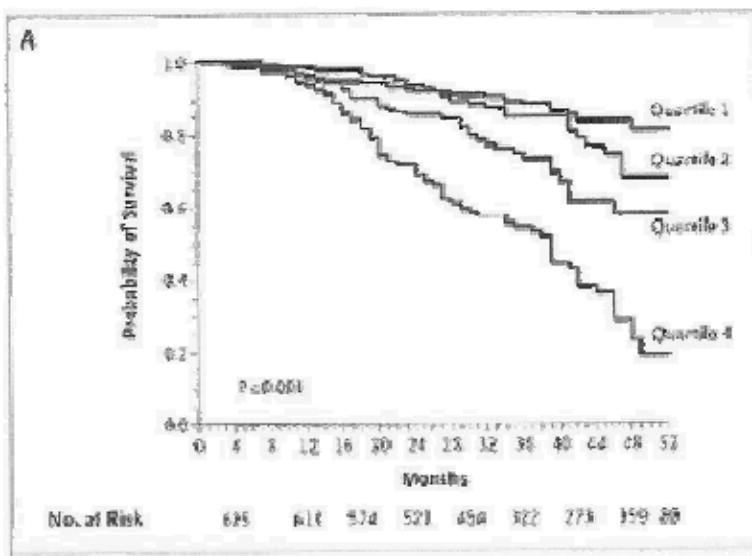


Indice: BODE (EPOC)= 0-10

BODE	0	1	2	3
FEV1%	≥ 65 o	50-64	36-49	< 36
Prueba de la caminata 6'.	≥ 350 m	250-349	150-249	< 249
Disnea (MMRC)	0-1	2	3	4
BMI	≥ 21	< 21	-----	-----



Celli BR et al. The Body-Mass Index, Airflow Obstruction, Dyspnea, and Exercise Capacity Index in Chronic Obstructive Pulmonary Disease. N Engl J Med 2004; 350:1005-1012